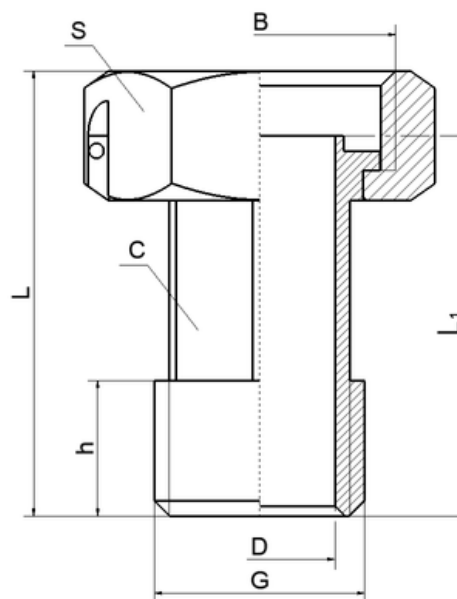
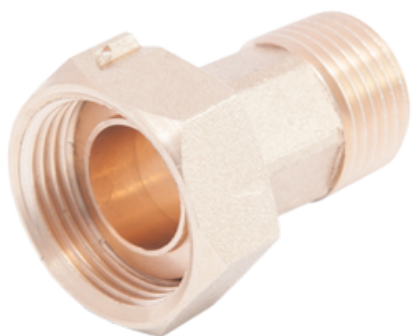




Śrubunek do wodomierza



| Opis | | | | | | | | Opakowanie ilość sztuk | | Masa jedn. | EAN | Index |
|------|------|------|------|------|----------------|----|-------|------------------------|--------|------------|---------------|-------|
| G | B | D | L | h | L ₁ | S | C | woreczek | karton | [g] | | |
| 1/2" | 3/4" | 15 | 44,5 | 13,5 | 38 | 30 | 6k18 | 25 | 100 | 140 | 5901797700195 | 042 |
| 1/2" | 3/4" | 15 | 38 | 9 | 32 | 30 | 6k18 | 25 | 100 | 120 | 5901797702342 | 276 |
| 1/2" | 3/4" | 14,5 | 32,5 | 12 | 25 | 30 | Ø21 | 25 | 100 | 124 | 5901797700256 | 116 |
| 3/4" | 1" | 18,5 | 52,5 | 14,5 | 45 | 37 | 6k22 | 10 | 50 | 252 | 5901797700201 | 043 |
| 3/4" | 1" | 21 | 35 | 13 | 27 | 37 | Ø26,5 | 10 | 50 | 180 | 5901797700263 | 117 |
| 1" | 5/4" | 26,5 | 59 | 16 | 50 | 46 | 6k30 | | 25 | 358 | 5901797700218 | 061 |
| 5/4" | 6/4" | 34 | 66 | 18 | 57,5 | 53 | Ø41,5 | | 25 | 656 | 5901797700225 | 118 |
| 6/4" | 2" | 39,5 | 75 | 19 | 65,5 | 64 | Ø47,5 | | 20 | 926 | 5901797700232 | 119 |
| 2" | 5/2" | 50 | 58 | 18,5 | 45 | 82 | Ø59,5 | | 15 | 1155 | 5901797700249 | 251 |

Charakterystyka

Materiał: CW617N

Max ciśnienie robocze: 16 bar

Max temperatura robocza: +110°C

Atesty



Atest Higieniczny B/BK/60210/0543/21
Narodowego Instytutu Zdrowia Publicznego